

A Brief History of Jack's Country Store

Jack and Lucille Downer purchased the store in August of 1969 and quickly re-named it Jack's Country Store. The building at that time did not have indoor plumbing, adequate lighting, or any amenities. They immediately started to grow and expand the business. In the years since, that has meant numerous construction and remodel projects and more than a dozen property acquisitions to accommodate the growing store. Through it all, we have worked to maintain the "old-time" feel of the store by keeping the wood floors, utilizing numerous museum-quality antique oak showcases, and most importantly, in our commitment to our customers with helpful service and honest pricing.

Visiting Jack's Country Store

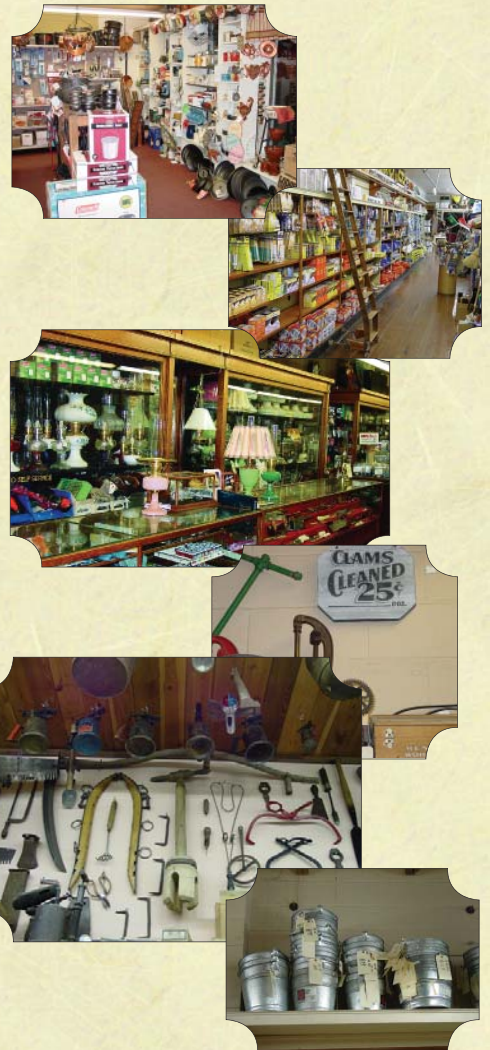
We are located at the four-way stop light in the heart of Ocean Park, Washington. Our store covers an entire city block, and contains so much merchandise that some people think that our walls are bulging. We use every inch of space to display our products, from tin signs on the ceiling to flags in the rafters. Under a single roof the store houses a complete hardware department with paint, electrical, plumbing, and sporting goods; a full grocery department with USDA choice meats, farm-fresh produce, and fresh-baked goods; a housewares department featuring country decor, wool blankets, Yankee Candles, and more. Our offerings are functional, utility merchandise-- not knick-knacks and souvenirs. Shopkeeper's ladders, hand-crank phones, a stained glass ceiling and other relics of the past are a part of our present. Our hardware department is also home to what we call "Jack's Museum," comprised of Jack Downer's personal collection of antique tools and gadgets.

We are open every day, from 7 a.m. to 8 p.m. You can start your morning off here with fresh-roasted local coffee, homemade biscuits and gravy, and a newspaper.

Any day of the week is perfect to visit. Our store is at the hub of activity in Ocean Park. We are open 363 days a year, closing only for Thanksgiving and Christmas.

Please call if you have any questions.

We want your visit to be an enjoyable one. If you need anything, please don't be afraid to ask. We are here to help!



Driving Directions

Approximate distance from Portland is 120 miles.

Follow either Highway 30 or Highway 26 west to Astoria.

Cross the Columbia River on the Astoria-Megler Bridge.

Follow US 101 west toward Long Beach.

At the intersection with SR 103 in Seaview, turn north toward Long Beach.

Follow SR 103 to Ocean Park.

Jack's is located at the four-way stop in the heart of Ocean Park.

Approximate distance from Seattle is 180 miles.

Take I-5 to Exit 104 at Olympia.

Follow US 101/SR 12 to Montesano.

Exit at Montesano and turn south on SR 107.

Follow SR 107 to US 101 and then turn south toward Raymond/South Bend.

Follow US 101 through Raymond and toward Long Beach.

At the intersection with SR 103 in Seaview, turn north toward Long Beach.

Follow SR 103 to Ocean Park.

Jack's is located at the four-way stop in the heart of Ocean Park.

